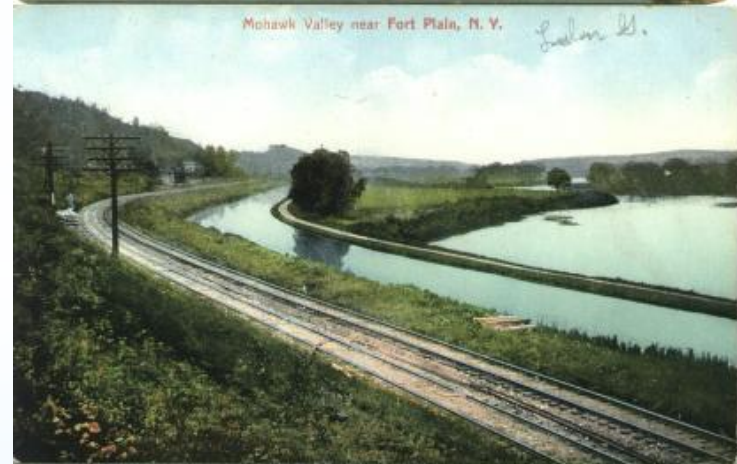


* Erie Canal





Erie Canal
Flanders NY c.1909

Otsquago Valley, Fort Plain, N. Y.



Erie Canal Aqueduct, Fort Plain, N. Y.



Loev and Meade's Restaurant, Syracuse, N. Y.



Canal Bridges, Fort Plain, N. Y.

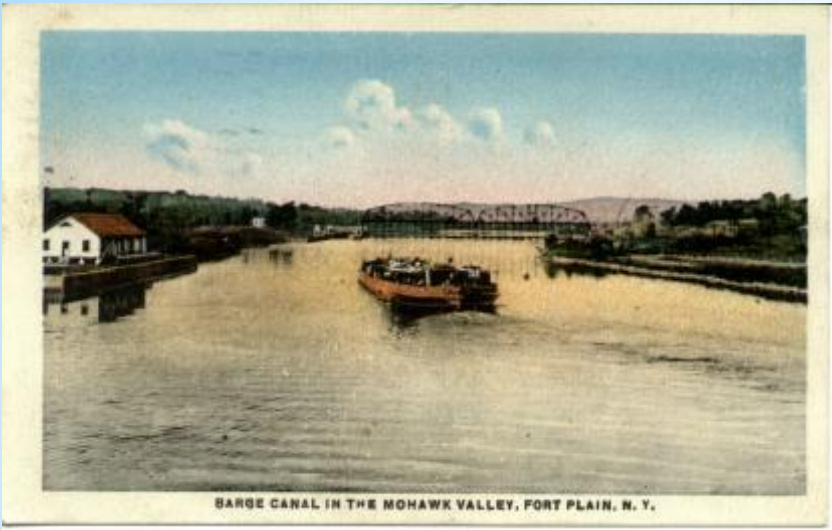


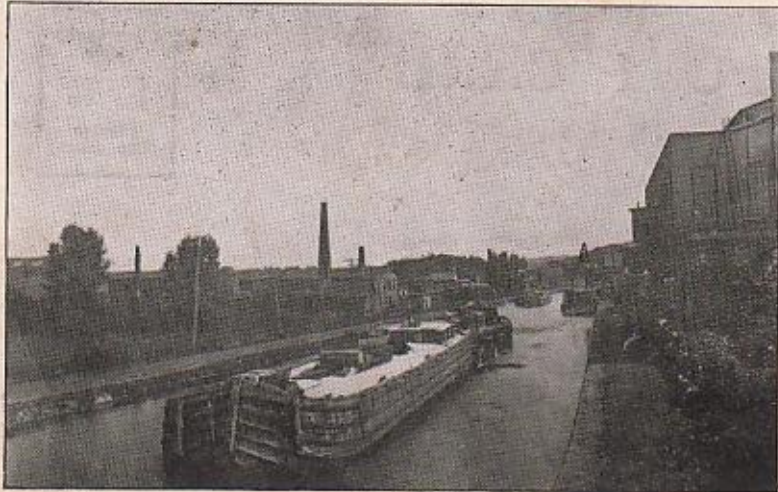
Montauk River going East, Canajoharie, N. Y.



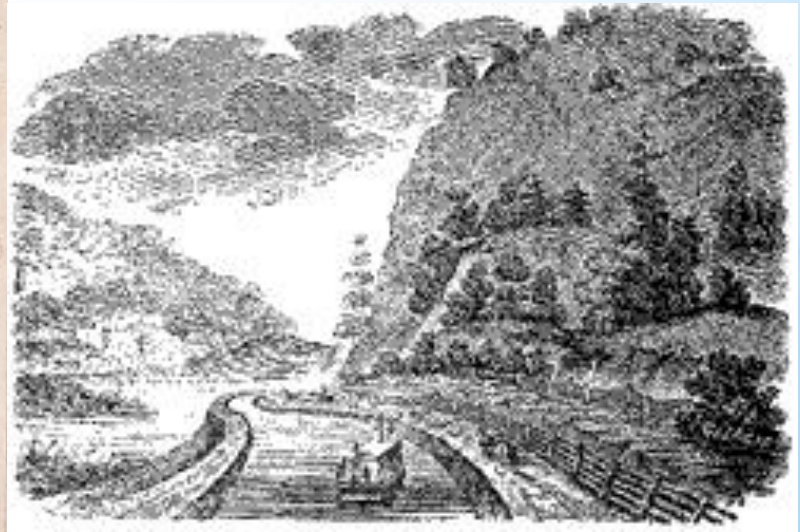
CANAL-LIFT BRIDGE
FORT PLAIN, N. Y.







ERIE CANAL, FORT PLAIN, N. Y.



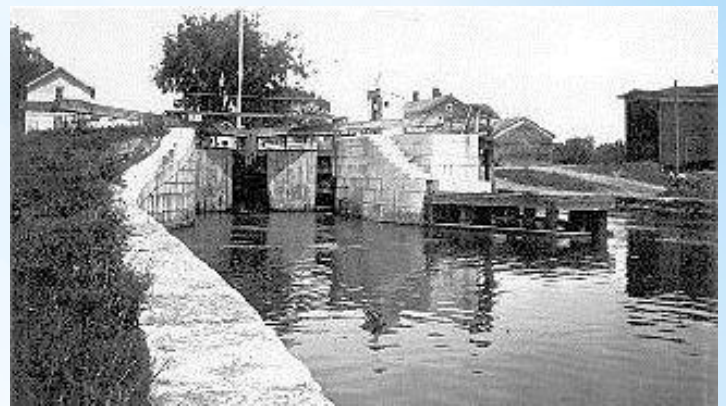


VIEW OF FORT PLAIN TAKEN IN 1871 AFTER THE FIRE. THE HOUSE IN FRONT WAS ONE OF THE SEVERAL WHICH WERE DESTROYED BY THE FIRE.

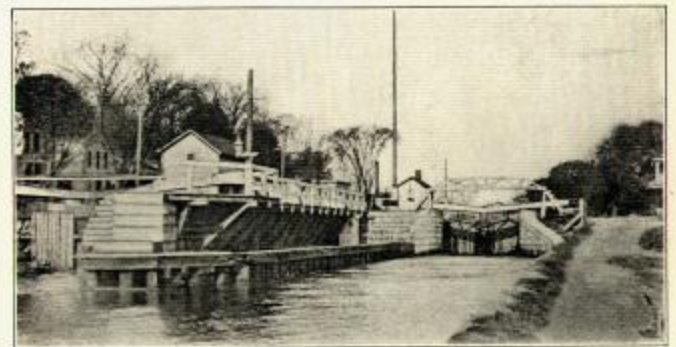


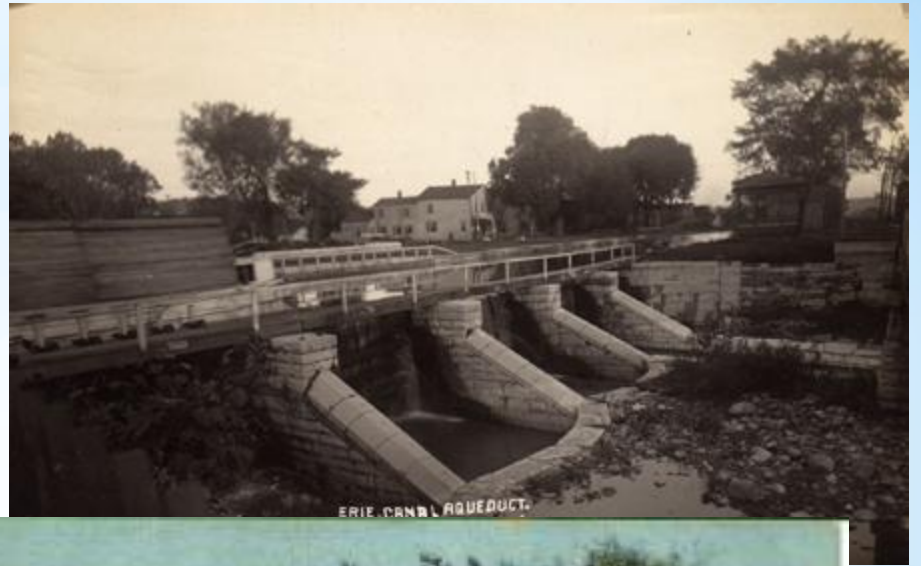
Erie Canal Lock, Fort Plain, N. Y.





Period of Construction—1817-1860





Period of Construction—1817-1860





Lovers' Leap, looking W., Little Falls, N. Y.



